

CPS 10556/1 - Map B

115°58'26"E

115°58'48"E

115°59'10"E

115°59'31"E

33°52'34"S

33°52'48"S

33°53'2"S

33°53'17"S

33°53'31"S

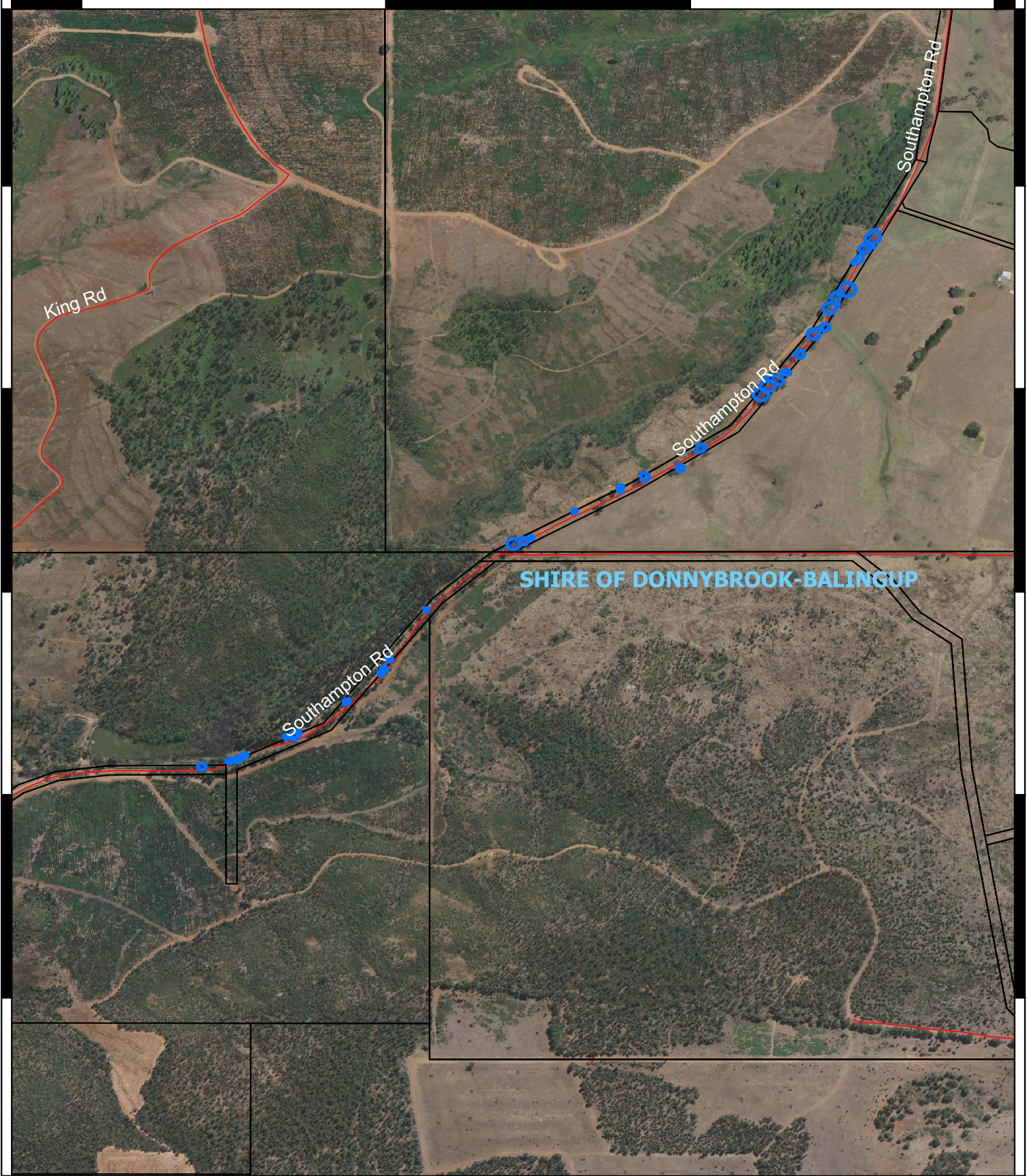
33°52'34"S

33°52'48"S

33°53'2"S

33°53'17"S

33°53'31"S




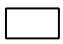


115°58'26"E

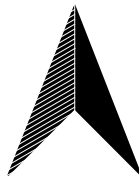
115°58'48"E

115°59'10"E

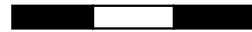
115°59'31"E

Legend

-  CPS areas applied to clear
 -  Land Tenure (LGATE_226) - SLIP
 -  Local Government Authorities
- Roads**
-  Minor



0 100 200 300 m



1:7,000

Projection: GDA2020



GOVERNMENT OF
WESTERN AUSTRALIA